

Dried Aggregates

Uniclass L61	EPIC F12
CI/SFB	Yp
April 2008	



10mm



Brittany Bronze (Golden Pea)

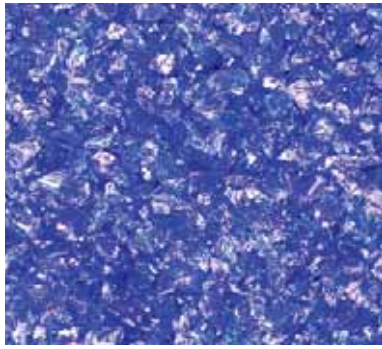


Yellow (Flint)



Round Gravel

6mm



Blue Glass



Green Glass



Turquoise Glass

2-5mm
Daltex
Range



Daltex Golden Pea
(Brittany Bronze)



Red (Red Granite)



Daltex Yellow (Flint)



Daltex Green (Green Basalt)



Daltex Golden Quartz



Silver (Silver Granite)



Daltex Black (Black Basalt)



Daltex White Flint



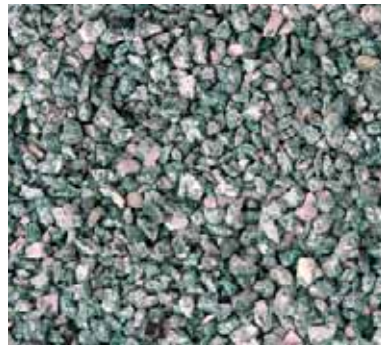
Daltex Staffs Pink

Dried Aggregates

2-5mm



Dark Blue Collux



Dark Green Collux



Orange Collux

1-3mm



Golden Pea



Daltex Red (Red Granite)



Emerald Green (Green Basalt)



Daltex Silver (Silver Granite)



Classic Spar (Rose)



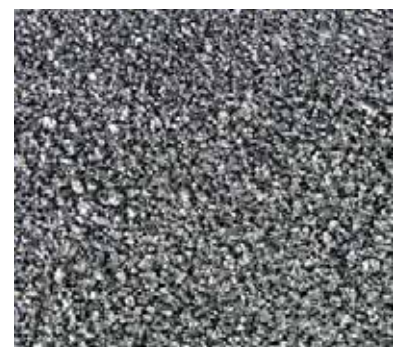
Amber Flint



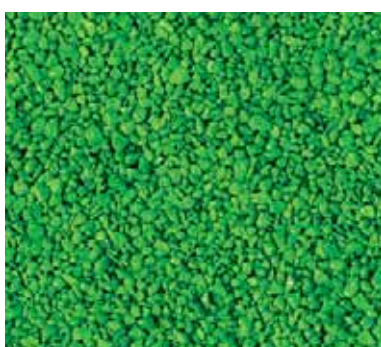
Chinese Bauxite



Guyanan Bauxite



Copper Slag



Jade Green Bauxite



Ruby Red Bauxite



Blue Bauxite

Dried Aggregates

Dry

Wet

For the purposes of photography the aggregates shown in this brochure are shown as wet or how they would appear encapsulated within resin. The example to the right shows how the supplied dried product differs in colour prior to application.



1-3mm



Westbere



White Calcined Flint



Sands & Industrial Products



Quartz Sand



110 Sand



52 Sand



30 Sand



16-30 Sand



8-16 Sand



Dolomite



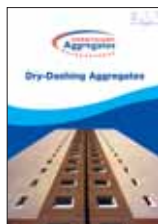
0-1 Silver



0-1.5 Classic Spar (Rose)

Dried Aggregates

In addition to our range of dried aggregate products, Derbyshire Aggregates also process an unrivalled range of decorative landscaping and dry-dashing products. Please contact our head office for information on these products.



Product	Aggregate type & Shape	Grades available	PSV	AAV	AIV	ACV	10% Fines	Hardness
110 Sand	Silica Sand Angular	0.075-0.18mm	N/A	N/A	N/A	N/A	N/A	7
16/30 Sand	Silica Sand Rounded	0.5-1mm	N/A	N/A	N/A	N/A	N/A	7
30 Sand	Silica Sand Rounded	0.3-0.5mm	N/A	N/A	N/A	N/A	N/A	7
52 Sand	Silica Sand Rounded	0.2-0.36mm	N/A	N/A	N/A	N/A	N/A	7
8/16 Sand	Silica Sand Rounded	1-2mm	N/A	N/A	N/A	N/A	N/A	7
Amber Flint	Flint Shingle Smooth Angular	1-3mm	Est	N/A	N/A	N/A	N/A	7
Chinese Bauxite	Bauxite Angular	0.9-1.4mm 1-3mm	70	4.0%	10	10	400kn	9
Blue Bauxite	Bauxite Angular	0.9-1.4mm 1-3mm	70	4.0%	10	10	400kn	9
Jade Bauxite	Bauxite Angular	0.9-1.4mm 1-3mm	70	4.0%	10	10	400kn	9
Ruby Bauxite	Bauxite Angular	0.9-1.4mm 1-3mm	70	4.0%	10	10	400kn	9
Guyanana Bauxite	Bauxite Angular	0.9-1.4mm 1-3mm	75	3.8%	29	34	100kn	9
Blue Glass	Angular	0-3mm 3-6mm 6-10mm	N/A	N/A	N/A	N/A	N/A	N/A
Green Glass	Angular	0-3mm 3-6mm 6-10mm	N/A	N/A	N/A	N/A	N/A	N/A
Turquoise Glass	Angular	0-3mm 3-6mm 6-10mm	N/A	N/A	N/A	N/A	N/A	N/A
Brittany Bronze (Golden Pea)	Quartzite Rounded	1-3mm 2-5mm 10mm	N/A	N/A	N/A	N/A	N/A	7
Classic Spar (Rose)	Calcined Flint Angular	0-1.5mm 1-3mm	57	2.1%	23	N/A	170kn	7
Copper Slag	Iron Silicate Angular	1-3mm	N/A	N/A	N/A	N/A	N/A	7
Daltex Black (Black Basalt)	Basalt Angular	2-5mm	55	3.5%	12	12	350kn	6.5
Daltex Golden Pea (Brittany Bronze)	Quartz Semi Rounded	1-3mm 2-5mm	N/A	N/A	N/A	N/A	N/A	7
Daltex Golden Quartz	Quartz Semi Rounded	2-5mm	N/A	N/A	N/A	N/A	N/A	7
Daltex Green (Green Basalt)	Basalt Angular	1-2mm 2-3mm 2-5mm	63	4.9%	18	17	250kn	6.5
Daltex Red (Red Granite)	Granite Angular	1-2mm 2-3mm 2-5mm	55	1.4%	12	21	220kn	6.5
Daltex Silver (Silver Granite)	Granite Angular	0-1mm 1-3mm 2-5mm	48	5.2%	34	30	110kn	6.5
Daltex Staffs Pink	Quartzite Rounded & Angular	2-5mm	N/A	N/A	N/A	N/A	N/A	7
Daltex White Flint (Calcined Flint)	Calcined Flint Angular	2-5mm	57	2.1%	23	N/A	170kn	7
Daltex Yellow (Yellow Flint)	Flint Shingle Smooth Angular	2-5mm	38	2.0%	18	N/A	265kn	7
Dark Blue Collux	Calcined Flint Angular	Various grades from 0.5mm to 8mm	57	2.1%	23	N/A	170kn	7
Dark Green Collux	Calcined Flint Angular	Various grades from 0.5mm to 8mm	57	2.1%	23	N/A	170kn	7
Orange Collux	Calcined Flint Angular	Various grades from 0.5mm to 8mm	57	2.1%	23	N/A	170kn	7
Dolomite	Dolomite Angular	0-1mm 1-3mm	N/A	N/A	N/A	N/A	N/A	4 Est
Emerald Green (Green Basalt)	Basalt Angular	2mm 3mm 2-5mm	61	7.3%	13	12	240kn	6.5
Golden Pea	Quartz Semi Rounded	1-3mm 2-5mm	55	N/A	N/A	N/A	N/A	7
Quartz Sand	Quartz Sand Rounded	0.18-0.335mm	N/A	N/A	N/A	N/A	N/A	7
Red (Red Granite)	Granite Angular	1-2mm 1-3mm 2-5mm	55	1.4%	12	21	220kn	6.5 Est
Round Gravel	Quartzite Natural Rounded	6mm 10mm	N/A	N/A	N/A	N/A	N/A	7
Silver (Silver Granite)	Granite Angular	0-1mm 1-3mm 2-5mm	48	5.2%	34	30	110kn	6.5
Westbere	Calcined Flint Angular	1-3mm	50	2.8%	N/A	N/A	90kn	7
White Calcined Flint	Calcined Flint Angular	Various grades from 0.5mm to 8mm	57	2.1%	23	N/A	170kn	7
Yellow (Yellow Flint)	Angular Flint Shingle Smooth	10mm	38	2.0%	18	N/A	265kn	7

AGGREGATE ABRASION VALUE, (AAV)

A known mass of aggregate chippings are set in resin in a small flat test panel and subject to abrasion on a grinding apparatus that is fed with a known type of sand. The loss in weight of the aggregate after a specified time as a percentage of the original weight is the AAV.

AGGREGATE CRUSHING VALUE, (ACV)

The aggregate crushing value is a value which indicates the ability of an aggregate to resist crushing. The lower the figure the stronger the aggregate, i.e. the greater its ability to resist crushing.

10% FINES VALUE

The test used to determine the TFV is not too dissimilar from the test to determine the aggregate crushing value. This test tends to be used for softer aggregate where a force of 400kn would crush most or all of the aggregate. Generally the higher the value the stronger the aggregate.

AGGREGATE IMPACT VALUE, (AIV)

The aggregate impact value is a strength value of an aggregate that is determined by performing the Aggregate Impact Test on a sample of the aggregate in question. The AIV is the percentage of fines produced from the aggregate sample after subjecting it to a standard amount of impact. Aggregate Impact Values, (AIV's), below 10 are regarded as strong, and AIV's above 35 would normally be regarded as too weak for use in road surfaces.

POLISHED STONE VALUE, (PSV)

The PSV of an aggregate is a measure of the resistance of an aggregate to polishing, and the value is established by subjecting the aggregate to a standard polishing process, and then testing the aggregate with the Portable Skid Resistance Tester. Aggregate that has a PSV over 60 is regarded as a High Skid Resistant Aggregate. The higher the PSV figure the greater resistance the aggregate has to polishing.



Introduction

Created in 1984 as a relatively small scale operation focused on discrete volumes to locally based merchants. Derbyshire Aggregates dynamic growth now finds itself as an industry leader, exporting products all over the world and contributing to a vast array of project types such as landscaping, decorative surface dressing, pebble dashing and flooring in addition to the staple construction aggregates.

Minerals are now sourced world wide and custom processing at the Arbor Low plant can result in washing, drying, screening, crushing and bagging to a variety of sizes. Technical liaison to deliver your requirements for your speciality when and where you want it and in the quantities to match your demanding schedules are a feature of our operations and delivery service.

With our main production facilities in Derbyshire and our two regional depots in Wales we have the facilities to produce many types of industrial or decorative materials. We are importing and exporting increasingly more aggregates and rock products to satisfy growing markets at home and abroad. With increased environmental concerns our recycling and reprocessing of materials has developed to help customers minimise waste.

Derbyshire Aggregates must be the first name to contact for any aggregate requirements. We have a vast selection of products in stock for immediate delivery. We also have a large aggregate library to help you find the materials you require and when it comes to delivery with our haulage network we can arrange deliveries when and where you want them 24 hours a day 7 days a week service.

Whatever your focus of operations, Derbyshire Aggregates are right at the heart of industry, supplying a wide range of high quality aggregates suitable for every project and available to match your requirements, whatever your needs, however specialised and wherever you need them.

With a total capability for technical support and physical delivery, Derbyshire Aggregates provides a wide range of materials, special mixtures and blends, washing, drying, screening, blending and bagging coupled with just in time delivery where you want it. Full technical back up and active liaison ensures your project delivers quality to today's exacting standards.

Most customer requirements are fairly standard but there are always jobs that need something different whether it be re-screening, washing, drying, crushing or packing into non-standard bags. As our business is built on a reputation of problem solving, sourcing the unusual or processing difficult materials. Plant operations are versatile enough to combine several different processes to extract high quality custom made products designed to suit unusually demanding applications. By working closely with customers we can help develop new products, solving problems at a design stage. With our expertise in aggregates we can input valuable data on performance and availability of products under review with competitive rates for processing and supply.



Dried Aggregates

Dried aggregates are produced at our Youlgrave plant in Derbyshire where we are able to wash, dry screen and package to your exacting requirements. Available for immediate delivery off the shelf and throughout the UK and Ireland, Derbyshire Aggregates has a wide selection of natural coloured dried decorative minerals, including granite, quartz, basalt and bauxite. Colour coating is available to many of these Products if required.

Delivered and applied across the UK and Worldwide, applications for these products include decorative surface dressings for resin bonded and spray systems. Some of these materials will be immediately recognisable following their extensive use throughout towns and cities in the UK and Europe on traffic calming schemes, cycle ways, bus lanes and many other projects requiring a high quality decorative coloured finish with a visual impact.

Many materials can be custom processed to your specific requirements. Deliveries can be made in bags, bulk bags, tankers and bulk tippers as required. Whatever your needs Derbyshire Aggregates must be the first name to call.

Our extensive sample library is based at our Arbor Low works site in Derbyshire. It contains hundreds of different types of materials for matching or sampling purposes. Samples are available on request should you wish to see any product prior to placing an order. The photographs featured in this brochure should only be used as a guide. The materials shown are derived from naturally sourced minerals and variations in colour may occur.

Special mixes are available to order and our technical department would be happy to advise you on any specific requirements you may have. If a special mix has been specified care should be taken to ensure that any schemes undertaken should use materials from the same batch of manufacture.



HEAD OFFICE

Arbor Low Works, Long Rake, Youlgrave,
Bakewell, Derbyshire, DE45 1JS
Tel: 01629 636500 · Fax: 01629 636425



SOUTH WALES DEPOT

Wyndham Close, Brackla Industrial Estate
Brackla, Bridgend, Mid Glamorgan, CF31 2AN
Tel: 01656 668004 · Fax: 01656 649268



Tel: 01629 636500
Fax: 01629 636425
Email: sales@derbyshireaggregates.com
Website: www.derbyshireaggregates.com

